

1515Design

# PRODUCT GUIDE



WWW.1515DESIGN.COM  
Made in France



# MAG SERIES SPIT ROTISSERIES



## MAG 40/8 Gas

W: 43" D: 27" H: 77 1/2"  
32 to 40 chickens/hour  
8 Burners - 112,000 BTU/hr (Natural Gas)



## MAG 58/4 Gas

W: 58 1/4" D: 27" H: 77 1/2" (with cart)  
24 to 28 chickens/hour  
4 Burners - 72,200 BTU/hr (Natural Gas)



## MAG 58/6 Gas

W: 58 1/4" D: 27" H: 77 1/2"  
36 to 42 chickens/hour  
6 Burners - 147,400 BTU/hr (Natural Gas)



## MAG 58/8 Gas

W: 58 1/4" D: 27" H: 77 1/2"  
48 to 56 chickens/hour  
8 Burners - 195,000 BTU/hr (Natural Gas)



## MAG 6 Gas

W: 58 1/4" D: 27" H: 77 1/2"  
30 chickens/hour on basket spits  
6 Burners - 147,400 BT/hr (Natural Gas)



## MAG 58/4 Electric

W: 58 1/4" D: 25" H: 77 3/4" (with cart)  
24 to 28 chickens/hour  
220 V Triphase - 20.6 Kw - 54 Amps



## MAG 58/6 Electric

W: 58 1/4" D: 25 1/2" H: 77 3/4"  
36 to 42 chickens/hour  
220 V Triphase - 29.5 Kw - 77.4 Amps



## MAG 58/8 Electric

W: 58 1/4" D: 24 3/4" H: 77 3/4"  
48 to 56 chickens/hour  
220 V Triphase - 40.3 Kw - 105 Amps



# MAGFLAM SERIES SPIT ROTISSERIES



## **MAGFLAM 40/5** Gas only

W: 43" D: 27" H: 79"

15 to 20 chickens/hour

2 Burners - 60,000 BTU/hr (Natural Gas)



## **MAGFLAM 40/8** Gas only

W: 43" D: 27" H: 77 1/2"

24 to 32 chickens/hour

3 Burners - 112,000 BTU/hr (Natural Gas)



## **MAGFLAM 58/3** Gas only

W: 58 1/4" D: 25" H: 77 1/2" (with cart)

18 to 21 chickens/hour

1 Burner - 41,000 BTU/hr (Natural Gas)



## **MAGFLAM 58/5** Gas only

W: 58 1/4" D: 27" H: 77 1/2"

30 to 35 chickens/hour

2 Burners - 82,000 BTU/hr (Natural Gas)



## **MAGFLAM 58/8** Gas only

W: 58 1/4" D: 27" H: 77 3/4"

48 to 56 chickens/hour

3 Burners - 132,000 BTU/hr (Natural Gas)





# MAG S SERIES SPIT ROTISSERIES



## MAG 40/4 S Gas

W: 40 1/2" D: 25" H: 73 1/2"  
12 to 16 chickens/hour  
90,000 BTU/hr (Natural Gas)



## MAG 40/6 S Gas

W: 40 1/2" D: 25" H: 73 1/2"  
18 to 24 chickens/hour  
100,000 BTU/hr (Natural Gas)



## MAG 40/8 S Gas

W: 40 1/2" D: 25" H: 73 1/2"  
24 to 32 chickens/hour  
112,000 BTU/hr (Natural Gas)



## MAG 40/4 S Electric

W: 40 1/2" D: 19" H: 72"  
12 to 16 chickens/hour  
220 V Triphase - 11 Kw - 31 Amps



## MAG 40/6 S Electric

W: 40 1/2" D: 19" H: 68 1/4"  
18 to 24 chickens/hour  
220 V Triphase - 16.6 Kw - 43.7 Amps



## MAG 40/8 S Electric

W: 40 1/2" D: 19" H: 73 3/4"  
24 to 32 chickens/hour  
220 V Triphase - 22.8 Kw - 60 Amps



CUSTOM COLORS AVAILABLE UPON REQUEST  
MAG AND MAGFLAM SERIES



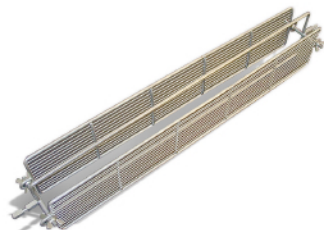




**AC 11** Large Pieces Basket



**AC 12** Roast Basket



**AC 13** English Spit



**AC 15** Fork Spit



**AC 16** Knucle Spit



**AC 17** Large Pieces Spit



**AC 18** Shelf Tray



**AC 20** Simplifil Spit



**AC 22** Storage Trolley



# BASKET ROTISSERIES



## DECO RB 15 Electric

W: 34 1/4" D: 30 3/4" H: 34 1/2"  
5 Baskets - 15 chickens/hour  
220 V Triphase - 6.7 Kw - 17.4 Amps



## DECO RB 20 Electric

W: 45" D: 32" H: 38 1/4"  
5 Baskets - 20 chickens/hour  
220 V Triphase - 9.1 Kw - 26.1 Amps



## DECO RB 30 Electric

W: 45" D: 32" H: 38 1/4"  
6 Baskets - 30 chickens/hour  
220 V Triphase - 10 Kw - 26.1 Amps



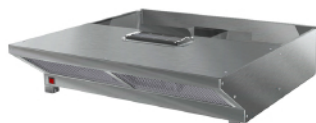
## NEOGRILL N1 Electric

W: 33 1/2" D: 28 1/3" H: 30 1/2"  
4 Baskets - 16 chickens/hour  
220 V Triphase - 7.3 Kw - 20 Amps



## NEOGRILL N2 Electric

W: 40 1/2" D: 19" H: 68 1/4"  
4 Baskets - 24 chickens/hour  
220 V Triphase - 9.1 Kw - 20 Amps



## VENTLESS HOOD S4

W: 33 1/2" D: 32 1/2" H: 10 1/2"  
220 V Single Phase - 185 W - 0.8 Amps



## STEAMBOX Electric

W: 33 3/4" D: 30 1/2" H: 35"  
4 Baskets - 16 chickens/hour  
220 V Triphase - 9 Kw - 20 Amps



## SENSUP S6 Electric

W: 40 1/2" D: 30 3/4" H: 35 3/4"  
26 Baskets - 20 to 30 chickens/hour  
220 V Triphase - 11.3 Kw - 30 Amps



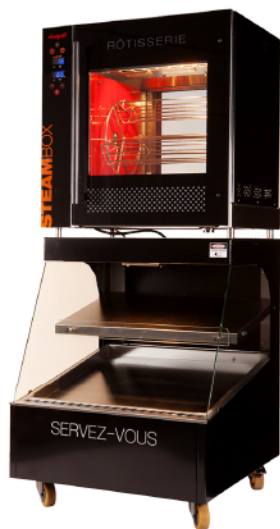
## SENSUP S9 Electric

W: 40 1/2" D: 37 3/4" H: 43"  
30 to 45 chickens/hour  
220 V Triphase - 15.9 Kw - 42.1 Amps



## NEOL (NEOGRILL COMBINED)

W: 33 3/4" D: 37 3/4" H: 76"  
220 V Triphase - 10.1 Kw - 26.7 Amps



## NEOBOX (STEAMBOX COMBINED)

W: 33 3/4" D: 37 3/4" H: 78 3/4"  
220 V Triphase - 11.6 Kw - 30.6 Amps



## V 60 LS5 PULSE

W: 23 1/2" D: 31 1/2" H: 77 3/4"  
220 V Triphase - 4.5 Kw - 20 Amps



## V 100 LS5 PULSE

W: 39 1/2" D: 31 1/2" H: 77 3/4"  
220 V Triphase - 20 Amps

# 1515Design

WE COVER ALL OF NORTH AMERICA



## OUR CUSTOMERS



1515 Design & Manufacturing

405 N. Oak Street, Inglewood CA 90302

Toll free (888) 671 0360 - Tel. (310) 671 0345 - Fax (310) 680 2879

E-mail : info@1515design.com Website : www.1515design.com